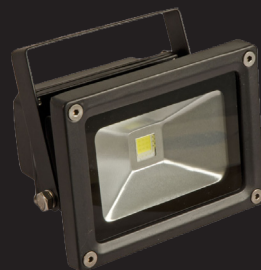


# Economy LED Floodlights

## Installation Instructions



For models: LEDFLE10B-31, LEDFLE10B, LEDFLE10W,  
LEDFLE20B-31, LEDFLE20B, LEDFLE20W, LEDFLE30B-31,  
LEDFLE30B, LEDFLE30W, LEDFLE50B-31, LEDFLE50B,  
LEDFLE50W

**This installation must be carried out by an electrician. Please read these instructions carefully before installation. Leave a copy for the user/maintenance engineer for future reference.**

### Specification

- LED Floodlight
- Class I (must be earthed)
- Wattage: Various (depending on model).
- Lamp type (included): LED
- Lumen Output: 750 - 4500lm (depending on model).
- Supply voltage: 110V-265V
- IP Rating: IP65
- Material: Aluminium & tempered glass.

### Important Installation Information

- Installation should be carried out in accordance with the latest edition of the I.E.E. wiring regulations (BS7671) and taking into consideration the latest Building Regulations. If in doubt, consult a qualified electrician.

IMPORTANT: Ensure that ALL electrical connections are tight with no loose strands, including factory made connections.

- Input voltage – 85V-265V
- Ensure there is adequate free air circulation of at least 100mm around the luminaire. All luminaires run hot. It is the installer's responsibility to consider fire risk and take appropriate precautions.
- Before commencing installation or maintenance, ensure electricity is switched off at the mains.
- The nearest illuminated surface must be at least 0.5m from the front of the fitting.

### Important User Information

- Always switch off mains supply before servicing, fitting or maintenance.
- Allow the LED and fitting to cool before replacing LED.

### Installation Instructions

- Check for concealed cables before drilling fixing holes.
- Remove the bracket pulling out the two bolts on both sides.
- Fix the bracket to a wall or similar hard surface.
- Fix the body to the bracket.

### Maintenance

- Before any maintenance ensure the product has cooled down.
- This product is supplied ready to use. No maintenance should be required, except if damaged or the front glass cover is broken. In either case please contact your supplier.

### Cleaning

- Depending on the application, clean the glass cover at regular intervals, and remove all dust or dirt to ensure luminaire works correctly.
- Use cotton duster (no alcohol, no solvent), only water to clean glass.

### Notes

- Please note this is an IP65 rated product - do not break any seals as this will affect it's water resistant rating.
- The fixture can not be modified. Any modification to this fitting will void the warranty.
- The manufacturer / importer shall not be responsible for any product damages caused by mounting procedures which are not in accordance with instructions.

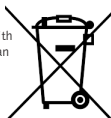


Product is suitable for mounting on flammable material



Product complies with all relevant European standards

PRN WEE/BJ1331XR



### Guarantee

This product is guaranteed for a period of 2 years from the date of purchase. The guarantee is invalid in the case of improper use, tampering, removal of the Q.C. date label, installation in an improper working environment or installation not according to the current edition of the I.E.E. Wiring Regulations (BS7671). The guarantee is also invalidated if the luminaire has been Mega tested. Should this product fail during the guarantee period it will be replaced free of charge, subject to correct installation and return of the faulty unit. We do not accept responsibility for any installation costs associated with the replacement of this product. Your statutory rights are not affected. We reserve the right to alter specifications without prior notice.